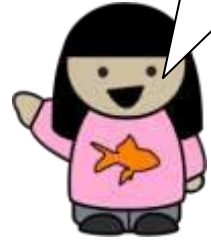


What is this? – What is that?

What is that?



That is a pen.



What is this?



This is a cap.



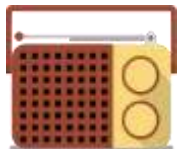
What is that?



That is a balloon.



That is a radio.



That is a lemon.



That is a Television.

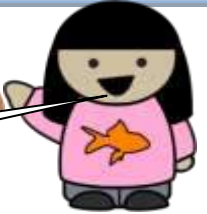


What is this? – What is that?

What is this?



This is a lemon.



This is a cake.



This is a guitar.



This is a balloon.

Choose the correct words.



This /That is a laptop



This /That is a lion.



This /That is a carrot.



This /That is a taxi.



This /That is a telephone.